

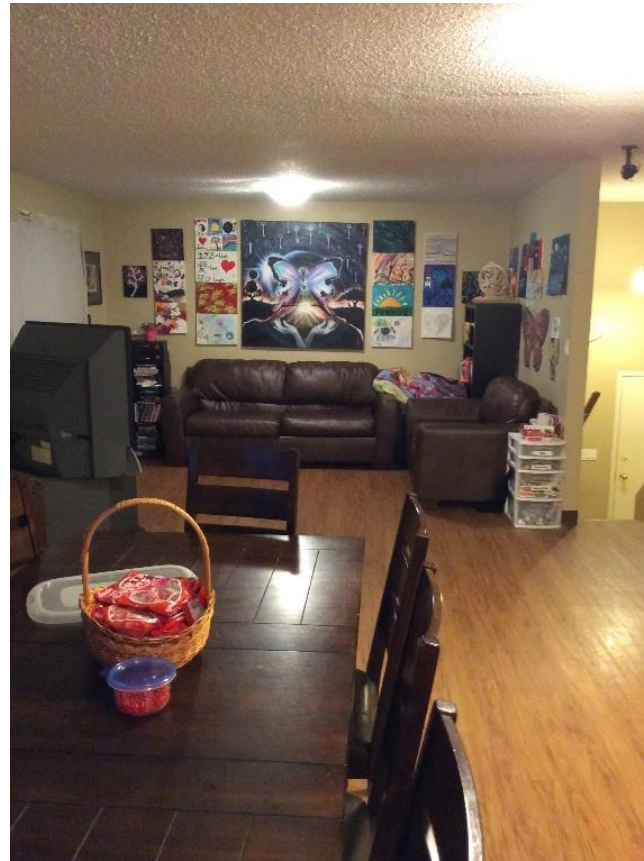
Navigating Youth out of Homelessness

Grande Prairie Youth Emergency
Shelter Society
o/a Sunrise House

Tanya Wald - Executive Director

Ashley Jordan - Youth Navigator

GP Youth Emergency Shelter Society / Sunrise House



Allow me to introduce....



Why a Youth Navigator?

- ▶ Housing First programs did not serve youth under 18
- ▶ Need for wrap around long term supports
- ▶ Youth without a present legal guardian unable to get housing
- ▶ Need for transitional care
- ▶ This program is our key to ending homelessness - ending youth homelessness with directly impact our adult homeless numbers

My Role

- ▶ Wrap around services for youth ages 15-24
 - ▶ Grocery shopping
 - ▶ Paying rent
- ▶ Bridging the Gap between Services
- ▶ Knowledge of Systems
- ▶ Building relationships
- ▶ Advocating
- ▶ Meeting clients
- ▶ No closed files
- ▶ Income Support
 - ▶ Doctor's appointments
- ▶ Maintain connection

Transition House



Transition House

- ▶ 5 bedrooms/2 bathrooms
- ▶ Supportive Roommate(s)
- ▶ House Expectations
- ▶ Criteria for moving in
- ▶ Donations
- ▶ Rent (\$450-\$600)

Message from Supportive Roommate

“My husband and I have been living as supportive roommates in the Transition House since June of last year. We are there so that the youth feel a mature presence in the home, to encourage rule-following and keep them safer. Also, because we are a couple we try our best to model good communication and a healthy relationship to the kids, most specifically being kind to one another. That being said, we still act as typical housemates would, sharing any concerns assertively, listening to all house members’ concerns, being warm to one another, and giving each other space when needed. In terms of connection with the kids, the Transition House is set up so that this happens organically and in an unstructured way (much like a regular share house). Some kids gravitate towards us and ask for help, and some just want to get along and do their thing. It’s quite an adult environment really.”

(Supportive Roommate)

Connections with Community Agencies

- ▶ HIV North
 - ▶ Permanent Supportive Housing
 - ▶ Intensive Case Management
 - ▶ Outreach Team
- ▶ Canadian Mental Health
 - ▶ Intensive Case Management
 - ▶ Mobile Addictions Outreach
- ▶ YMCA
 - ▶ Centralized Intake Assessment
 - ▶ Bridging the Gap
- ▶ Probation
- ▶ FASD Network
- ▶ Crime Prevention
- ▶ Alberta Supports
- ▶ Children Services
- ▶ Saint Lawrence Centre
- ▶ Rotary House
- ▶ Odyssey House
- ▶ High Schools
- ▶ RCMP - community policing

Services Accessed

- ▶ Alberta Supports
- ▶ Adult Detox
- ▶ Youth Residential Detoxification and Stabilization
- ▶ AHS I.D. Program
- ▶ Supportive Independent Living Program
 - ▶ Mountain Plains Community Services Society of the North

Barriers to Success

- ▶ Affordable Housing
- ▶ Income Supports
 - ▶ 16 and 17 year olds
 - ▶ Hotel rooms
 - ▶ Sobriety
- ▶ Incarceration
 - ▶ No release plans
- ▶ Bank Accounts
- ▶ Identification Cards
- ▶ Access to Specialized Treatment for Mental Health
 - ▶ Waitlists
 - ▶ Intensity
- ▶ Waitlist for Adult and Youth Treatment
 - ▶ All out of region
 - ▶ Family component
- ▶ Only 1 male shelter
 - ▶ banned
- ▶ Only 1 female shelter
 - ▶ Prioritizes domestic violence
- ▶ No family shelters
- ▶ Only 1 Youth Navigator

Case Examples

The background features abstract, overlapping geometric shapes in various shades of green, ranging from light lime to dark forest green. These shapes are primarily located on the right side of the slide, creating a modern, layered effect. The text 'Case Examples' is centered in a clean, sans-serif font.

Jay*

- ▶ 20 years old
- ▶ New to Grande Prairie
- ▶ No previous relationship with the youth shelter

*not his real name

Ryan*

- ▶ 21 years old
- ▶ Grew up in Grande Prairie and British Columbia
- ▶ Previous relationship with the youth shelter (4 years with no relationship)

*not his real name

Haley

- ▶ 19 years old
- ▶ New to Grande Prairie
- ▶ Existing relationship with the youth shelter

Recommendations for Change

- ▶ Workers having more time to spend with clients
- ▶ Workers working with clients while they're incarcerated (in a good head space)
- ▶ Cities having more affordable & supportive housing
- ▶ Services are more accessible to clients